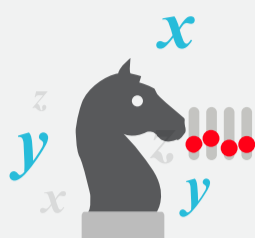


THE PROVIDER SPACE MEETS ALL THE REQUIREMENTS FOR OPTIMIZATION TO DELIVER VALUE



Decision spaces involve multiple variables and trade-offs



Objectives are definable and often compete with one another



Constraints limit a firm's ability to maximize each objective, and interplay with one another



Complexity and the corresponding impact of deploying optimization are high



10 USE CASES FOR PRESCRIPTIVE ANALYTICS IN HEALTHCARE

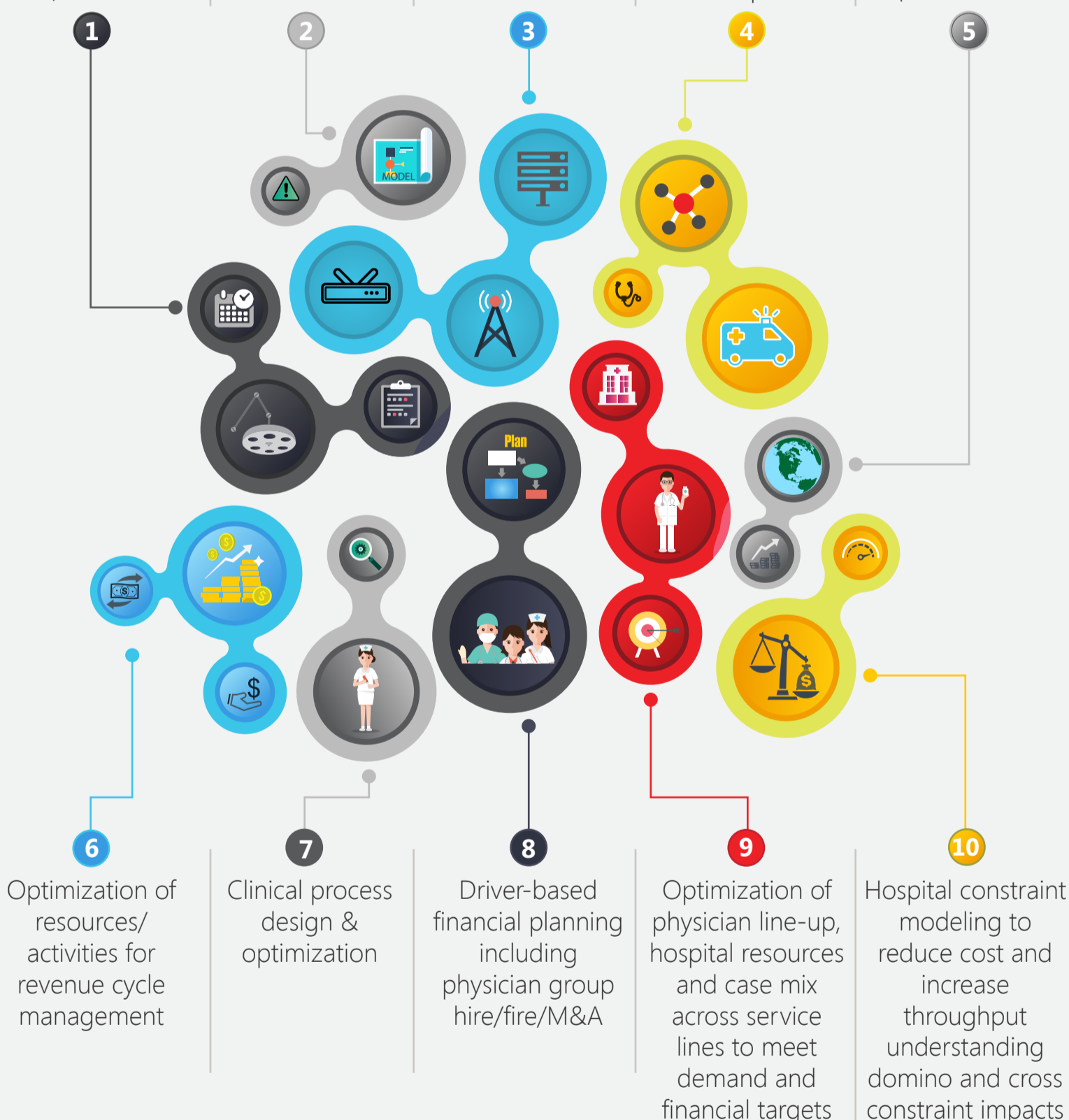
Optimization of ED, OR, PACU and ICU scheduling policies

Long-term business model/risk evaluation (e.g. physician employment, ACO)

Network optimization of facilities and service lines

Regional policy optimization including coverage network, ambulance/ED, specialized clinics and GP policies

Population management / outreach program optimization, downstream resource requirements and financial performance



Get Your Free Demo Of **River Logic**



GET YOUR DEMO

866.326.0171 | www.riverlogic.com